

## SPECIFICATIONS

<b>Type</b>	Single-Sided 100mm Deep	
<b>Where to fix</b>	Wall Mounted	
<b>LED Source</b>	LED Modules SA 2398 Equivalent from SA-LED Australia	
<b>Power Source</b>	Suitable Power Supply from SA-LED Australia	
<b>Dimension</b>	Length	Any Size
	Height	Up to 1,500mm
	Deep	150mm
<b>Face</b>	4.5mm Opal Acrylic	
<b>Return</b>	Aluminum Extrusion Bar - Mill (2B) Finish - White or Black - 2Pac Spray (Other colours)	
<b>Back</b>	ACM or Equivalent Material	
<b>Cover</b>	25 / 40 / 50mm x 1.6mm Removable Angle Trim	

- Price do not include acrylic sheets.
- Price do not include packaging and delivery
- Artwork has to be provided by the client.
- Please make sure to include the original artwork files that is:

- ✓ 1:1 Scale
- ✓ PDF File format (\*.pdf)
- ✓ 100% Vector (\*.eps)
- ✓ CorelDRAW (\*.cdr, \*.dxf)

## 3D STRUCTURE

## Front View

## LEDs

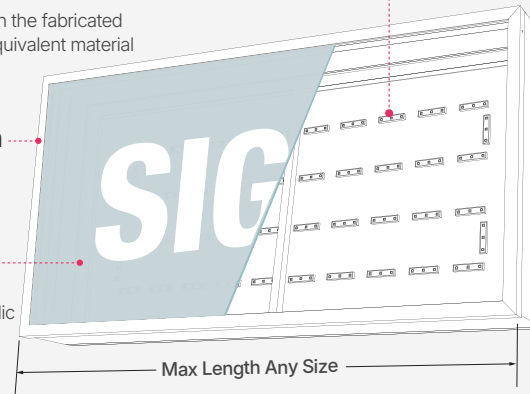
Installed on the fabricated  
ACM or Equivalent material

## Return

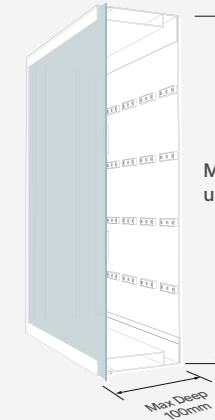
Aluminum

## Face

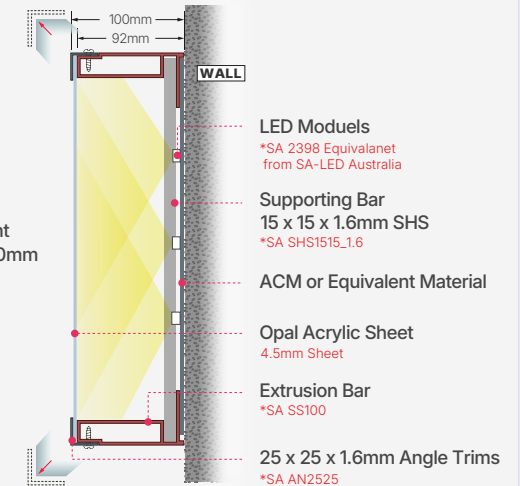
4.5mm  
Opal Acrylic



## Side View

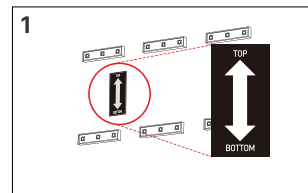


## Side View : Wall Mounted

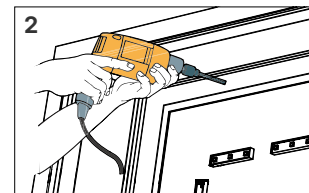


\*All LED modules, power suppliers, extrusion bars, angle trims and other bars can be purchased in [www.SA-LED.com](http://www.SA-LED.com)

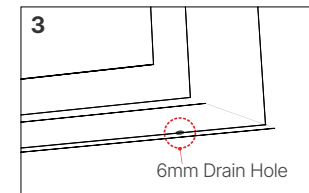
## INSTALLATION GUIDE



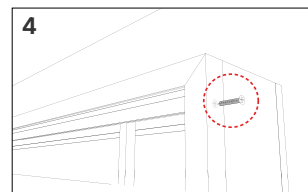
TOP & BOTTOM indicative sticker at the inside.



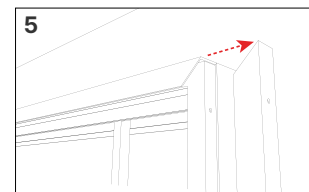
25x2mm perimeter fixing area for easy installation.



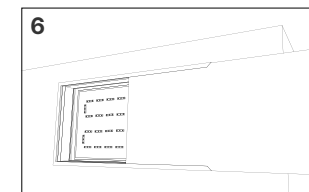
Predrilled 6mm drain holes on bottom.



Remove screw from angle trims for insert acrylic.



Remove angle trim from lightbox.



Insert acrylic face into body frame.

## PROJECTS

